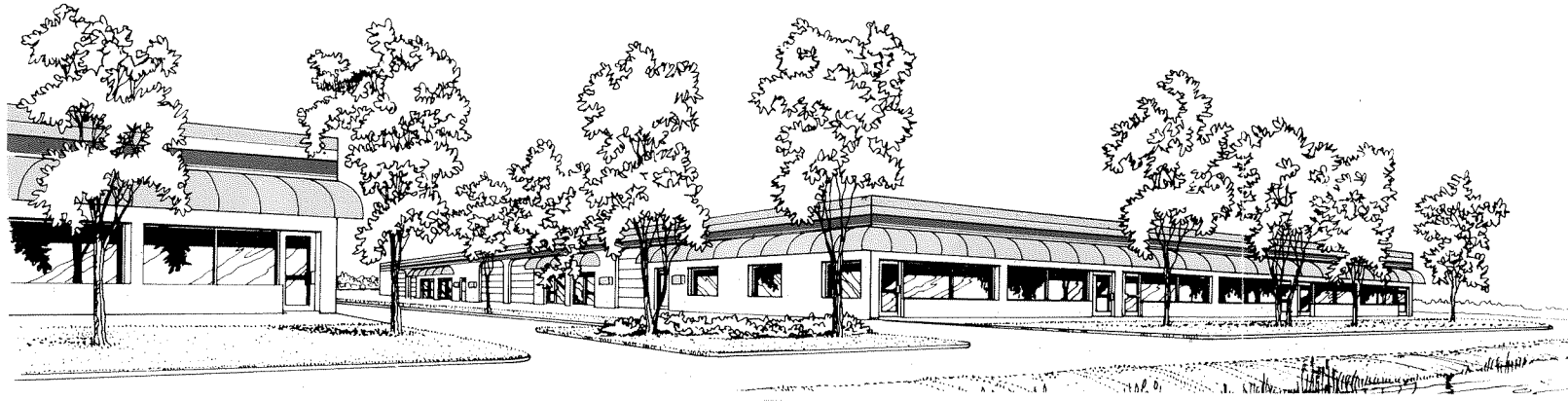
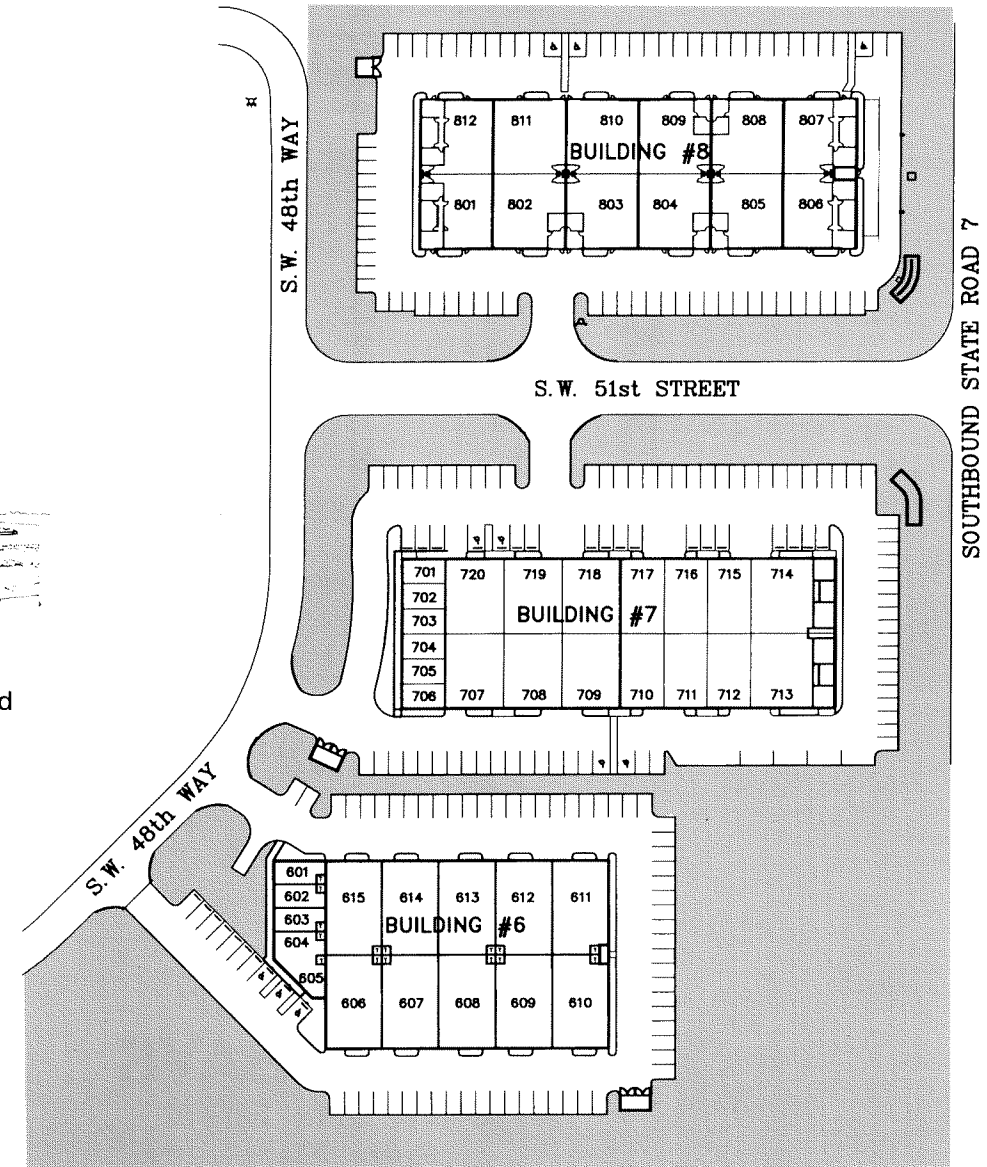
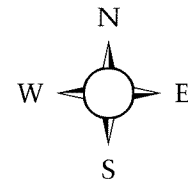
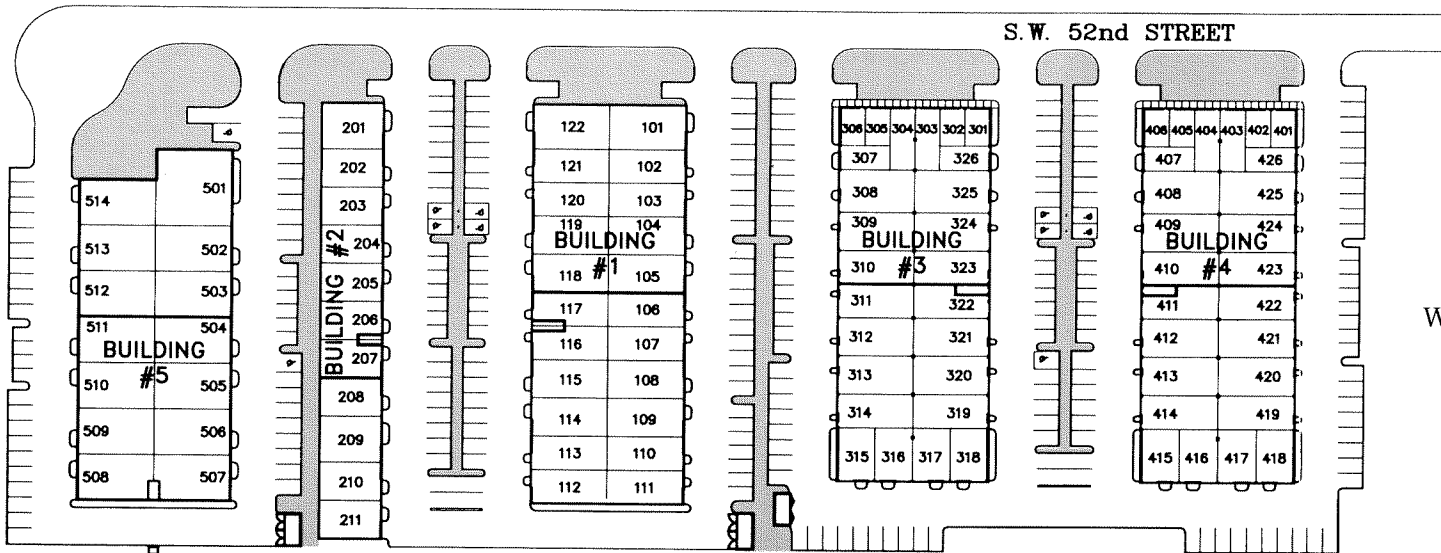


# PELICAN BAYS

OFFICE SUITES OFFICE/WAREHOUSES



- Convenient to Florida's Turnpike and I-95
- Office Suites from 460 sq. ft.
- Office/Warehouse Space from 800 sq. ft.
- 15' Ceilings
- 12' x 12' Garage Doors
- Bathrooms in every Unit
- Ample Parking
- Insulated Roofs, Exhaust Fans
- Three-Phase Electric Available
- City Water and Sewer
- Offices Painted, Carpeted, and Air Conditioned
- Immediate Occupancy
- On-Site Leasing/Management Office



**(954) 581-5600**